

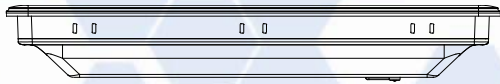


HMI with 12.1" X VGA TFT Display

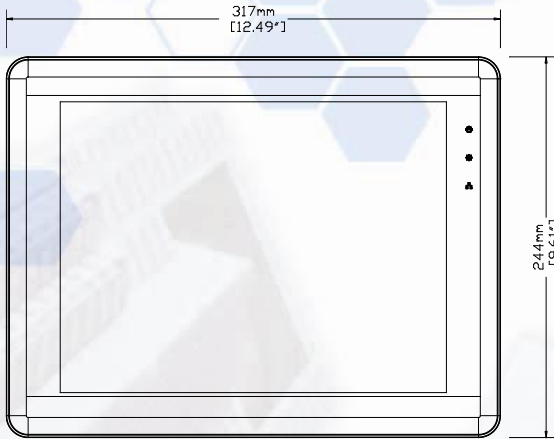
Features

- Aluminum Housing and Brand-new Color & Design
- Video Input Ports Support NTSC and PAL
- 12.1" 1024x768 TFT Industrial Grade LCD
- Fan-less Cooling System
- Built- in 256MB Flash Memory and RTC
- NEMA4/IP66 Compliant Front Panel
- Long Life LED Back Light with Ceramics Package
- SD Card Slot Supports SD/SDHC Cards
- Power Isolator Inside
- Com1 or Com3 RS485 2W Supports MPI 187.5K
- CAN Bus Device Supports CANopen Protocol
- Com1 / Com3 RS485 & CAN Bus Built-in Isolation

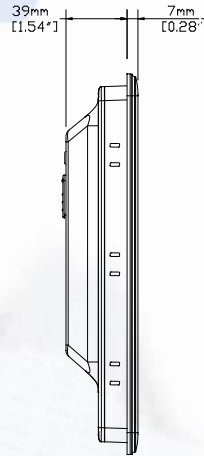
Display	Display	12.1" TFT
	Resolution	1024 x 768
	Brightness (cd/m ²)	500
	Contrast Ratio	700:1
	Backlight Type	LED
	Backlight Life Time	50,000 hr.
	Colors	16.2M
Touch Panel	Type	4-wire Resistive Type
	Accuracy	Active Area Length(X)±2%, Width(Y)±2%
Memory	Storage(MB)	256
	RAM (MB)	256
Processor		32Bit RISC CPU 800MHz
I/O Port	SD Card Slot	SD/SDHC
	USB Host	USB 2.0 x 1
	USB Client	USB 2.0 x 1
	Ethernet	10/100 Base-T
	COM Port	COM1 (RS-232/RS-485 2W/4W), COM3(RS-232/RS-485 2W),CAN Bus
	Audio	Audio Line Out – 3.5 mm jack x 1
	Video Input Port	NTSC/PAL RCA x 2
RTC		Yes
Power	Input Power	24±20%VDC
	Power Consumption	850m A@24V
	Power Isolation	Built In
	Voltage Resistance	500VAC (1 min)
	Isolation Resistance	Exceed 50MΩ at 500VDC
	Vibration Endurance	10 to 25Hz(X,Y,Z direction 2G 30 minutes)
Specification	Enclosure	Aluminum
	Dimensions WxHxD	317 x 244 x 46mm
	Panel Cutout (mm)	305 x 231
	Weight (kg)	Approx. 2.1 kg
Environment	Protection Structure	IP66 front panel (O ring seal)
	Storage Temperature	-20° ~ 70°C (-4° ~ 158°F)
	Operating Temperature	0° ~ 50°C (32° ~ 122°F)
	Relative Humidity	10% ~ 90% RH (non-condensing)
Certifications	CE	EN 55022: 2006+A1: 2007 EN 61000-3-2: 2006+A2: 2009 EN 61000-3-3: 2008 EN 55024: 1998+A1: 2001+A2: 2003
	FCC	Comply with FCC class A
	UL	UL508 Type 1, NEMA 4
Software		EasyBuilder Pro



Top View



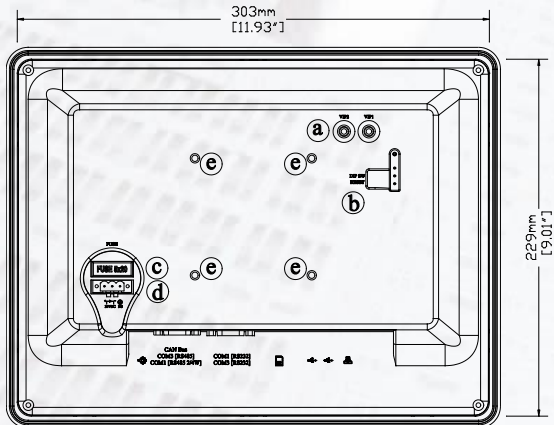
Front View



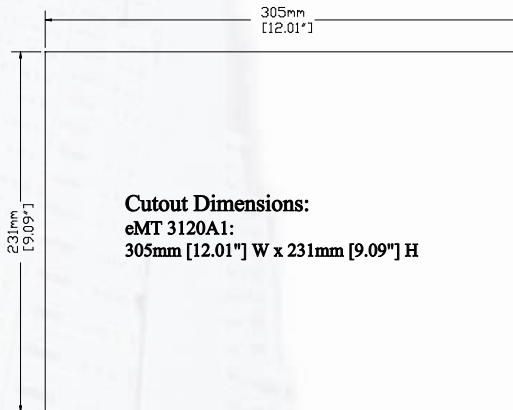
Side View

Ordering Information

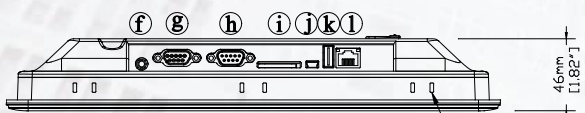
- **eMT3120A**
12.1" TFT LCD HMI,
256MB flash memory/
256MB RAM on board,
Video Input Port RCA x 2
- **FLZ485000**
Multi-Connector cable
Com1[485]/Com3[485]/
CAN Bus
- **FLZ232000**
Multi-Connector cable
Com1[232]/Com3[232]



Rear View



Cutout Dimensions:
eMT 3120A1:
305mm [12.01"] W x 231mm [9.09"] H



Bottom View

Panel-mounting clamp slots, 12 places

a	Video Input Port x 2	g	Com1 RS485, Com3 RS485, CAN bus
b	DIP SW & Reset Button	h	Com1 RS232, Com3 RS232
c	Fuse	i	SD CARD SLOT
d	Power Connector	j	USB Client port
e	VESA 75mm Screw Holes	k	USB Host port
f	Line Out	l	Ethernet Port

Rev. 06-01-2014